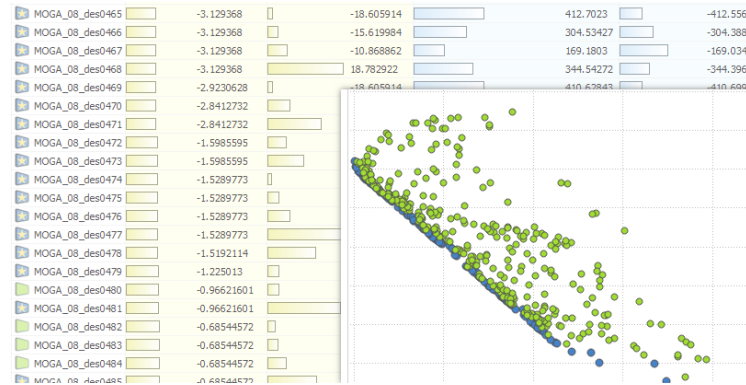


ADD-ON ADVANCED OPTIMIZATION

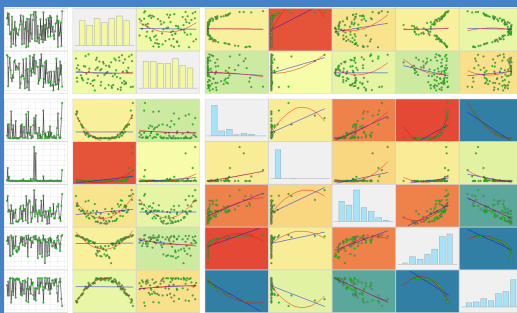
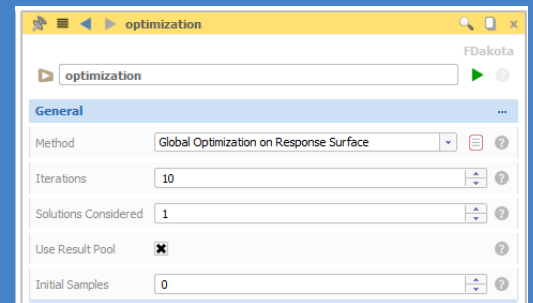
EFFICIENT OPTIMIZATION STRATEGIES AND INTERACTIVE CHARTS

Benefit from a set of advanced optimization strategies and interactive charts that show you trends and parameter correlations. Save computational time and bring your product faster to the market by using response surface techniques such as Kriging and Neural Networks. The SSH Resource Manager, a light-weight grid engine, is also part of this add-on and allows you to configure, distribute and run design studies on HPC clusters.



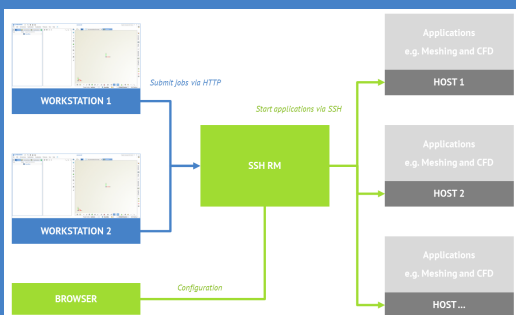
STATE-OF-THE-ART OPTIMIZATION

- * Sensitivity analysis based on Latin Hypercube Sampling
- * Response surfaces (Kriging, Neural Networks, RBF, Polynomials)
- * Additional single-, multi-objective and multi-point strategies
- * GUI for the DAKOTA optimization toolkit (Sandia National Labs) to access and directly use a comprehensive optimization library



FAST AND EFFICIENT VISUALIZATION

- * 2D charts with interactive design selection
- * Correlation plots and regression curves
- * Fully integrated into a single GUI for a better ease of use



SSH RESOURCE MANAGER

- * Configure the use of your remote meshing and simulation tools
- * Distribute studies and optimizations to remote machines